



SOUTH AFRICAN POULTRY ASSOCIATION

Founded 1904

MONTHLY EGG PRICE REPORT: NOVEMBER 2017

Any and all information, data, know-how, documentation, materials and other communications, written or oral, which are disclosed or provided to SAPA or its designees by a SAPA member shall be regarded as confidential information belonging to that member and will not be disclosed to any other member.

Representation:

The statistics are compiled from data provided by egg producers. The information is collected by Kobus Odendaal auditors and handled confidentially; SAPA only receives the aggregated data. This report represents 22.7% of total potential egg production for the month. If you are a producer who reads and uses this report, please send your data to be included. Contact Melissa Dannhauser (meliskruger@gmail.com) at the auditors for the input forms.

All prices exclude VAT.

1. SUMMARY OF KEY INDICATORS

Table 1: Sample sales volumes and values

		Total	Graded	Ungraded
Cages	Dozens	9 976 476	7 863 008	2 113 468
	Rands	R 178 107 315	R 141 418 697	R 36 688 618

Table 2: Average prices

	Total R/doz	Graded R/doz	Ungraded R/doz
Cages	R17.85	R17.99	R17.36
Free Range/Barn	R24.19	R24.19	n/a

2. EGG PRICE ACROSS ALL SIZES

The monthly movement in the average egg price (all sizes, excluding free range/barn) is shown in Graph 1.

The November 2017 price for cage eggs was R17.85 per dozen.

- Compared to October 2017 the egg price increased by 9%;
- Compared to November 2016 it increased by 39.6%.

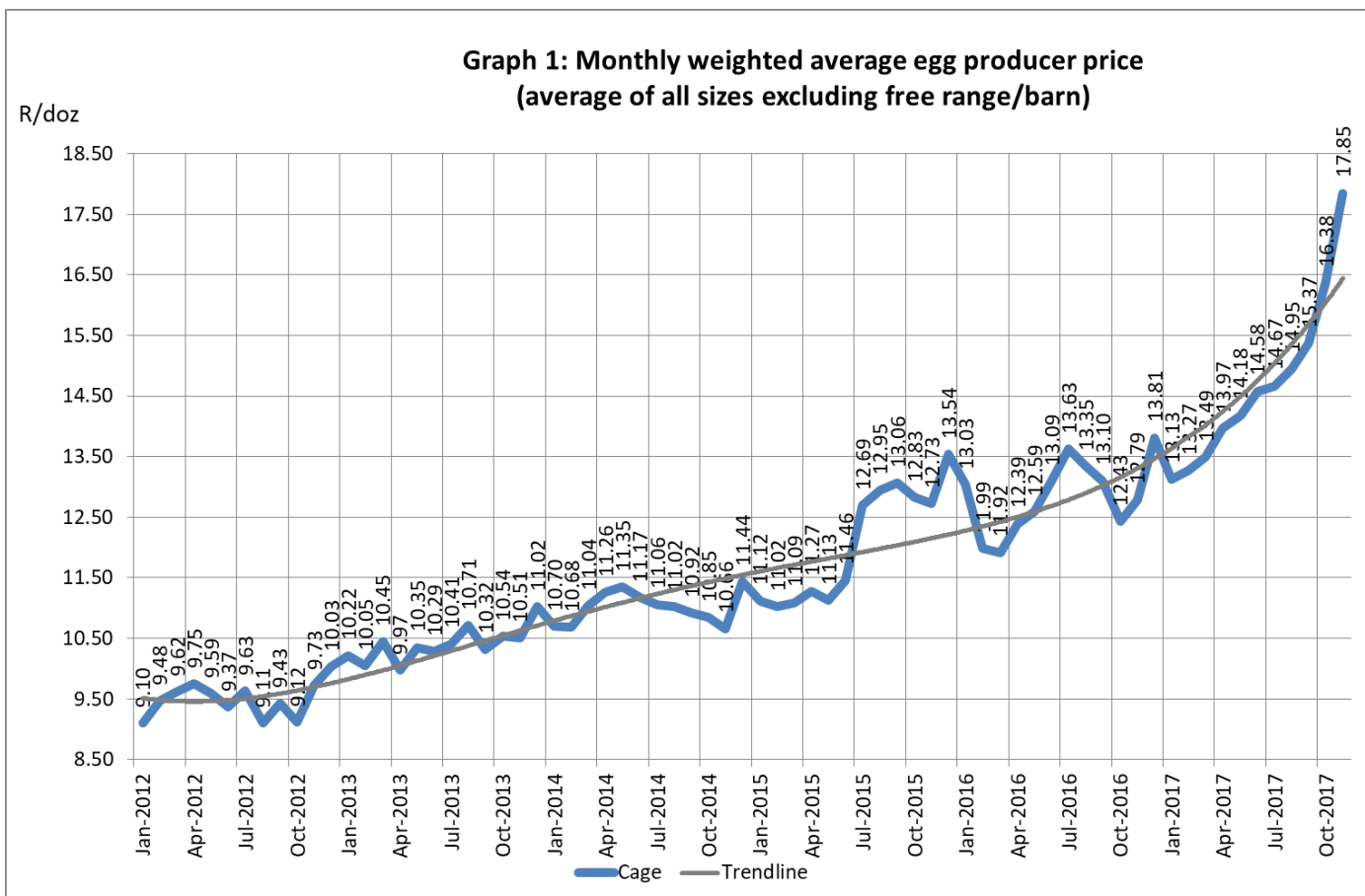


Table 3 shows the average egg prices (excluding free range/barn) since 2012 and the year-on-year percentage change.

Table 3: Egg prices

Year	2012	2013	2014	2015	2016	2017 ytd
R/doz	9.50	10.40	11.01	12.07	12.84	14.70
% change	1.8	9.5	5.9	9.6	6.4	14.6

3. EGG PRICE FOR GRADED AND UNGRADED EGGS

The movement in the producer price since January 2012, for both graded and ungraded eggs (excluding free range/barn eggs), is depicted in Graph 2.

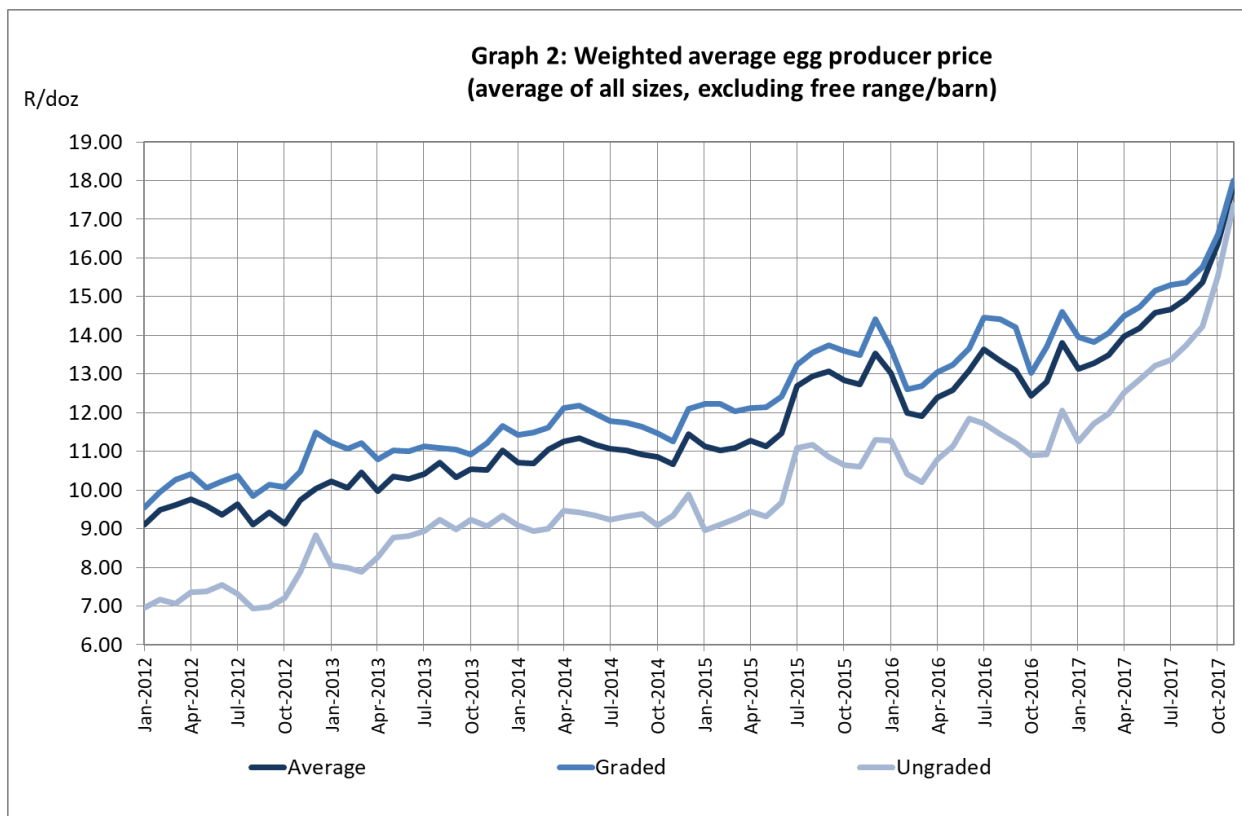
During November 2017, the average egg price for graded eggs was R17.99 per dozen.

- This is an increase of 8.4% in comparison with October 2017;
- This is an increase of 31.2% in comparison with November 2016.

In the same month, the average egg price for ungraded eggs was R17.36 per dozen.

- This is an increase of 11.8% in comparison with October 2017;
- This is an increase of 59.1% in comparison with November 2016.

In the sample surveyed, of the total dozens sold for November 2017, 79% were graded and 21% were ungraded.



4. FEED PRICE

The weighted average feed price includes distribution but excludes medication, additives and VAT. The monthly average feed price for November 2017 was R3091.00/tonne. It decreased by 0.3% on a monthly basis and decreased by 25.9% on a yearly basis (Graph 3).

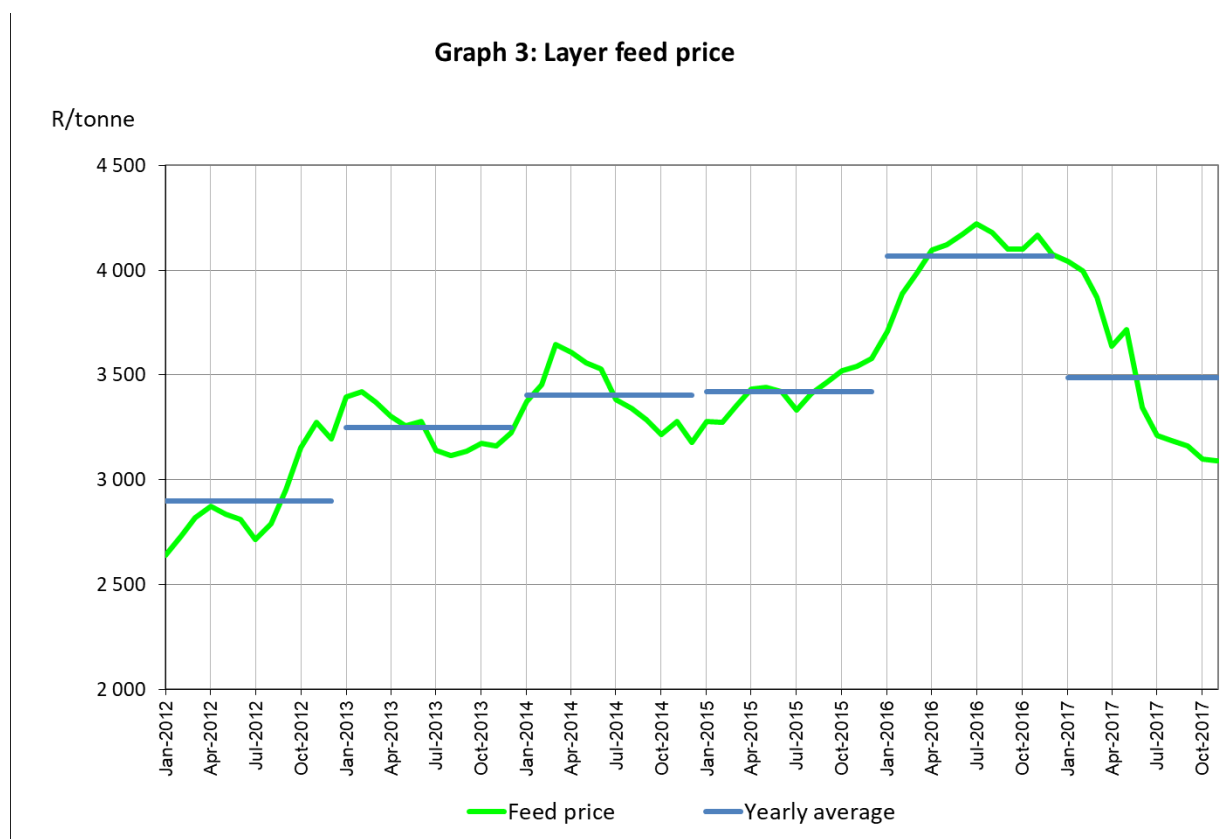


Table 4 shows the average feed prices since 2012 and the year-on-year percentage change.

Table 4: Feed prices

Year	2012	2013	2014	2015	2016	2017 ytd
R/tonne	2 900	3 248	3 405	3 422	4 069	3 488
% change	+23.7	+12.0	+4.8	+0.49	+18.9	-14.3

5. CULL PRICE AND AGE

The average price per cull hen for the month of November 2017 was R34.96, an increase of 17.2% on a monthly basis and an increase of 31.7% on a yearly basis (Graph 4). The average cull age at depletion during November 2017 was 74.0 weeks.

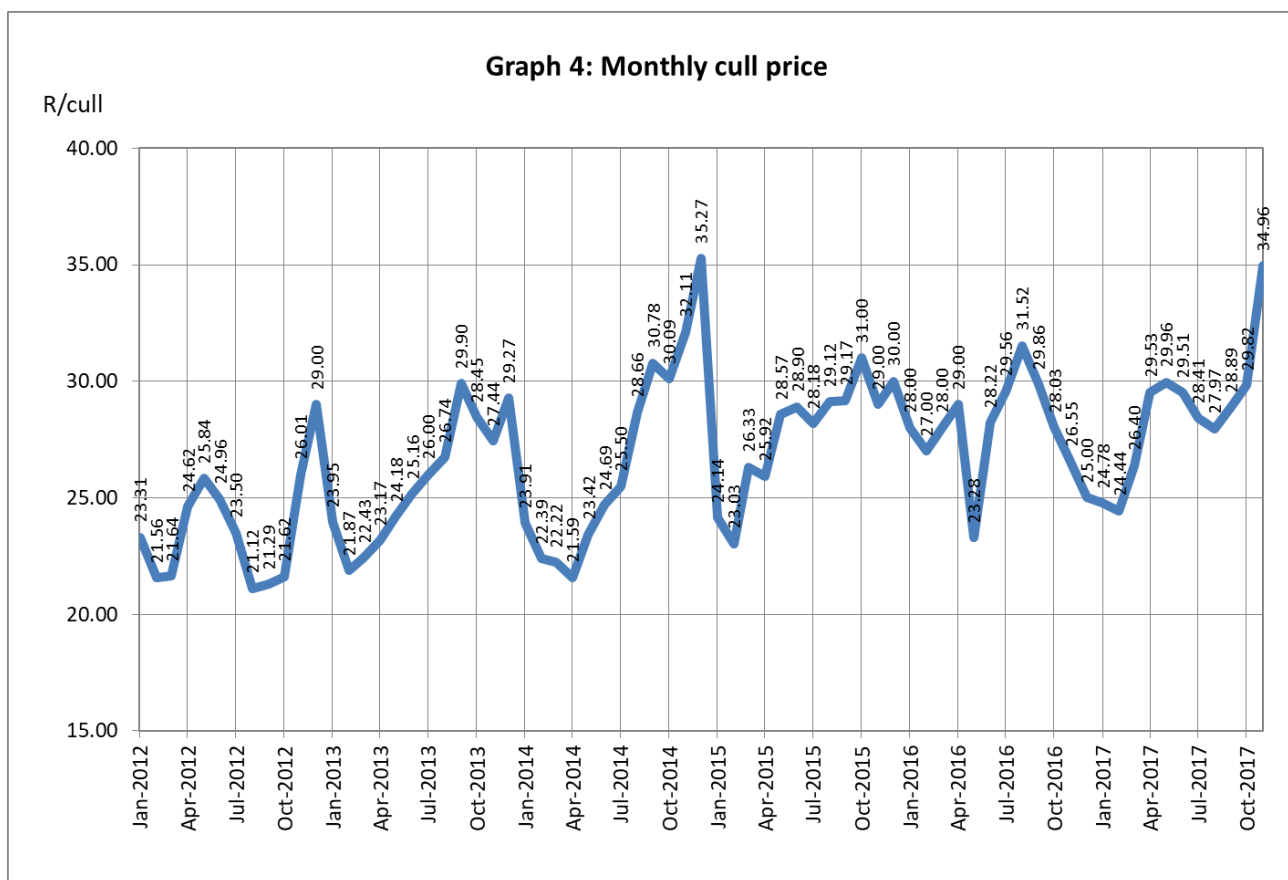


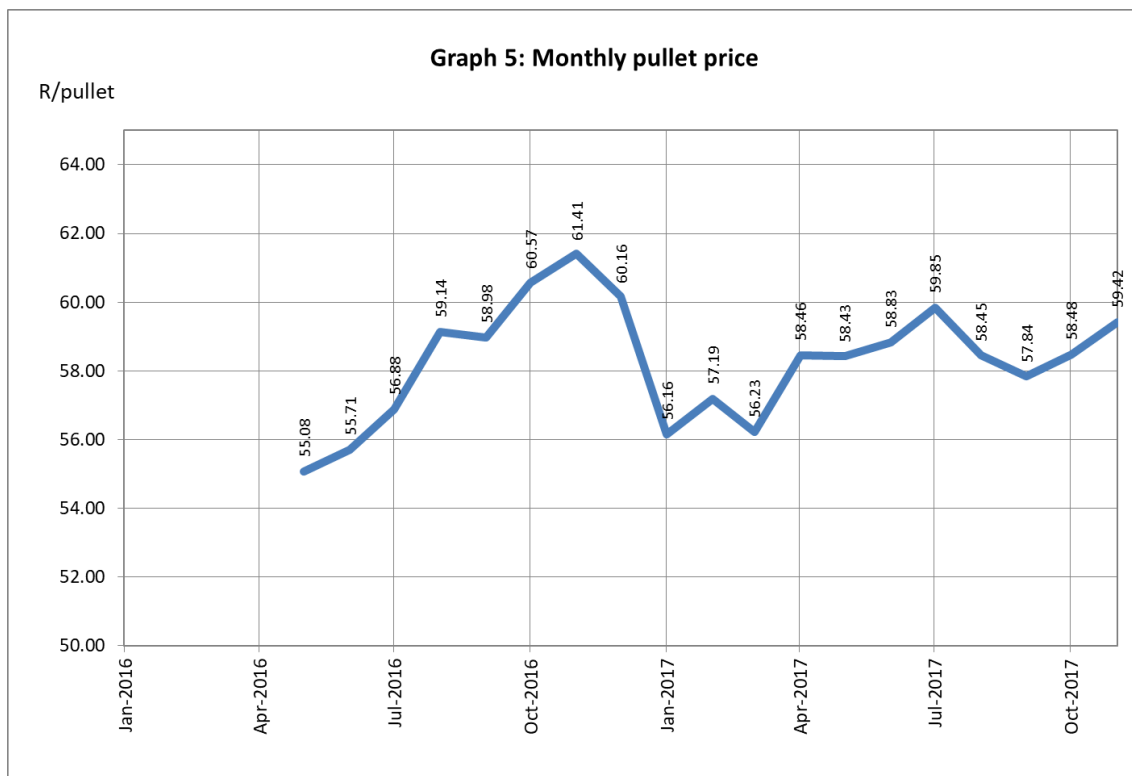
Table 5 shows the average cull prices since 2012 and the year-on-year percentage change, as well as the average cull age.

Table 5: Cull hen prices

Year	2012	2013	2014	2015	2016	2017 ytd
R/hen	23.71	25.71	26.72	27.78	27.84	28.61
% change	+5.8	+8.5	+3.9	+3.97	+0.20	+2.77
Age (weeks)	72.5	73.4	75.2	74.8	71.8	72.8

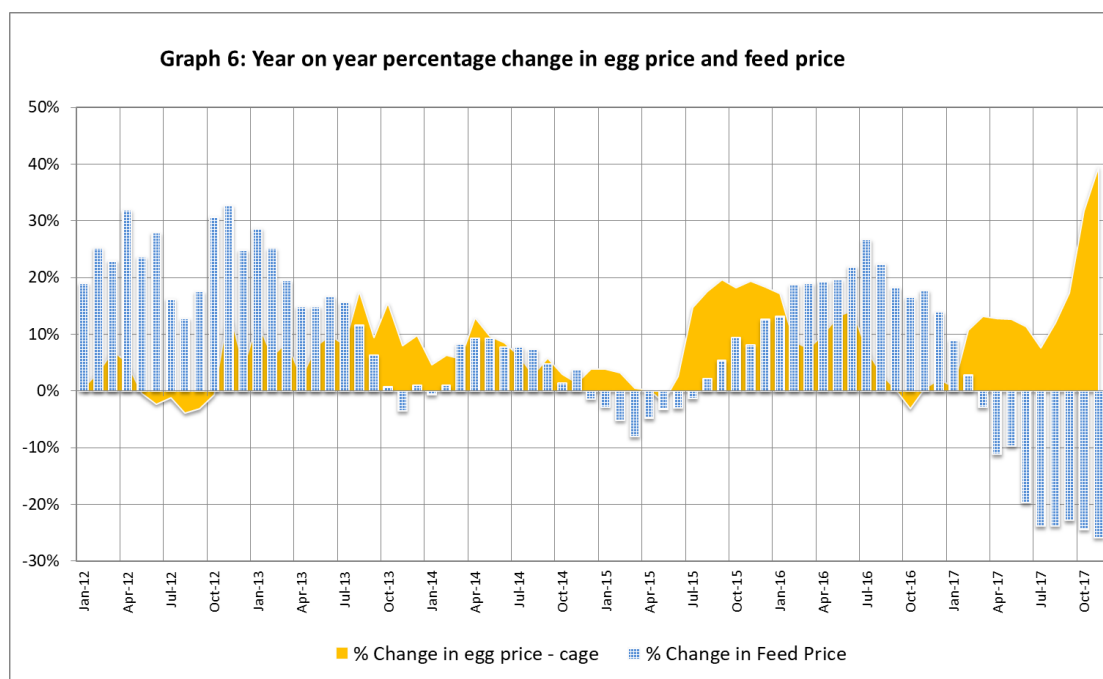
6. POINT-OF-LAY PULLET PRICES

The average price per point-of-lay pullet for the month of November 2017 was R59.42, an increase of 1.6% on a monthly basis and a decrease of 3.2% on an annual basis.



7. CHANGE IN EGG AND FEED PRICES

Year-on-year % changes in egg price and feed price are shown in Graph 6. The year 2016 was a difficult one for egg producers when feed prices escalated at a higher rate than egg prices, putting margins under severe pressure. The situation looks more positive in 2017, with the effect of the AI outbreak apparent in the second half of the year.



Definition of egg price:

Egg producer price, excluding rejects and pulp, after rebates, ad spend, “price offs” and settlement discounts; including packaging.

Disclaimer: *The views expressed in SAPA STATS reports reflect those of SAPA in collaboration with its independent consultants and do not constitute any specific advice as to decisions or actions that should be taken. While every care has been taken in preparing documents no representation nor warranty or any expressed or implied undertaking is given and no responsibility or liability is accepted by SAPA as to the accuracy or completeness of the information contained herein whether as electronic data or as a finished report. SAPA or its independent consultants do not accept responsibility or liability for any damages of whatsoever nature which any person may suffer as a result of any decision or action taken on the basis of the information contained herein. All opinions and estimates contained in the reports may be changed after publication without notice.*

All forecasts of future production, prices, trade or feed and feed ingredient trends are based on the opinion of independent consultants contracted to SAPA. These forecasts are for guideline purposes only and SAPA does not, in any way, warrant that these predictions will be realised. SAPA therefore cautions any user of this information to treat it in an appropriate manner.

These statistical reports and/or electronic data are placed in the public domain and may be used by other parties conditional to the source of the data/ report being attributed to SAPA.